



# PARI inhalation therapy

## Product Overview

German company PARI has been developing products for inhalation therapy since 1906.

Through its own research, development, and production, PARI has established itself as an international leader in the field, with several of its products becoming the “gold standard.”

With a focus on simplicity and efficiency for both patients and healthcare professionals, solutions are developed that promote adherence to prescribed treatment, for safer and more effective care.



# VORTEX®

VORTEX is an antistatic holding chamber. VORTEX distributes the medication evenly, allowing the patient to inhale the spray in just a few breaths. This makes it easier to manage the challenging coordination of pressing the inhaler and breathing in correctly. It also prevents too much medication from depositing in the mouth and throat.

Can be boiled, washed in a dishwasher, and cleaned in a washer-disinfector.



## VORTEX complete

Art.no.	Description
051G5001	Mouthpiece
051G5061	Adult mask & handle
051G5041	Child mask approx. 1-4 years
051G5021	Baby mask approx. 0-1 years & handle

VORTEX with baby mask and adult mask comes with a handle that makes it easier to press the inhaler with one or two hands.



## VORTEX 10 pcs

Art.no.	Description
051G5100	VORTEX with mouthpiece 10 pcs
051G5101	Mouthpiece 10 pcs

## VORTEX masks

Art.no.	Description
051G0713	Baby mask approx. 0-1 years
051G0715	Child mask approx. 1-4 years
051G0741	Adult mask soft with adapter

VORTEX is ordered separately.



## Stationary devices



### PARI BOY® Classic

Art.no.	Description
---------	-------------

130G1209	PARI BOY Classic
----------	------------------

The classic inhalation system that can be used to treat and relieve symptoms in the lower airways. Approved for inhalation of antibiotics.

Complete inhaler including connection tubing, air filter, nebuliser with blue nozzle.



### PARI SINUS2

Art.no.	Description
---------	-------------

128G1006	PARI SINUS2
----------	-------------

For the treatment of acute and chronic sinusitis. The compressor creates a pulsating aerosol that enables it to effectively penetrate the sinuses. Approved for patients from 6 years of age.

Complete inhaler including connection tubing, air filter, nebuliser with orange nozzle, and nose plug.



### PARI COMPACT2

Art.no.	Description
---------	-------------

152G1009	PARI COMPACT2
----------	---------------

Complete inhaler including connection tubing, air filter, nebuliser with orange nozzle.

## Portable devices



### VELOX®

Art.no.	Description
---------	-------------

055G1001	VELOX
----------	-------

Smooth, fast, and effective aerosol therapy in a portable format.

Complete inhaler including power cord, carrying bag, VELOXcare, and nebuliser with mouthpiece.

### eFlow® Rapid

Art.no.	Description
---------	-------------

178G1100	eFlow Rapid
----------	-------------

New updated design! Mobile system for the fastest nebulisation. Approved for inhalation of antibiotics.

Complete inhaler including charging cable, carrying bag, Easycare, fabric pouch, 2 aerosol heads, and 2 nebulisers with mouthpieces.



# PARI CENTRAL AIR

PARI CENTRAL AIR creates an inhalation system by reducing the pressure and flow of the central air supply together with the LC SPRINT nebulizer.



## PARI CENTRAL AIR

Art.no.	Description
---------	-------------

058G1110	PARI CENTRAL AIR incl. connection tubing
----------	--



## PARI Clip

Art.no.	Description
---------	-------------

058G2001	Clip 5 st
----------	-----------

When assembled, the Clip becomes a practical holder for the nebulizer and connection tubing on the PARI CENTRAL.

## PARI Connection tubing, spare parts

Art.no.	Description
---------	-------------

041G4550	Connection tubing 2,2 m with tubing adapter
----------	---

041G4593	Tubing adapter, 1 pcs
----------	-----------------------

041G4594	Tubing adapter, 50 pcs
----------	------------------------

For PARI CENTRAL



## PARI LC SPRINT Nebuliser

Art.no.	Description
---------	-------------

023G5800	LC SPRINT, blue nozzle, 1 pcs
----------	-------------------------------

Complete nebulizer with mouthpiece, nozzle, and 2.2 m connection tubing



## PARI LC SPRINT Hospital packs

Art.no.	Description
---------	-------------

023G6010	LC SPRINT, blue nozzle 10 pcs
----------	-------------------------------

023G6011	LC SPRINT Junior, yellow nozzle, 5 pcs
----------	--

023G6012	LC SPRINT Star, red nozzle, 5 pcs
----------	-----------------------------------

Complete nebulisers with mouthpieces. Excluding connection tubing.

# Year packs

Nebuliser LC SPRINT, air filter, and connection tubing need to be replaced annually on a stationary inhaler to maintain optimal performance. Order an annual pack for a complete kit and an easy replacement!



## PARI BOY Classic – Year pack

Art.no.	Description
---------	-------------

023G3219	PARI BOY Classic
----------	------------------

Blue nozzle included. Standard inclusion when ordering PARI BOY Classic.



## PARI BOY Junior – Year pack

Art.no.	Description
---------	-------------

023G3319	PARI BOY Junior
----------	-----------------

Yellow nozzle included. For younger patients, approximately 0–4 years.



## PARI BOY Pro – Year pack

Art.no.	Description
---------	-------------

023G3019	PARI BOY Pro
----------	--------------

Blue and red nozzles included. The red nozzle is designed to treat the peripheral airways.



## PARI COMPACT2 – Year pack

Art.no.	Description
---------	-------------

023G3511	PARI COMPACT2
----------	---------------

Orange nozzle included.



## PARI SINUS2 – Year pack

Art.no.	Description
---------	-------------

023G3816	PARI SINUS2 Year Pack
----------	-----------------------

041G0576	Nose plug for PARI SINUS2, 3 pcs
----------	----------------------------------

For the upper airways. Orange nozzle included. Compatible only with PARI SINUS2.

# VELOX® consumables

The VELOX nebuliser is replaced annually. Order an annual pack for a complete kit and an easy replacement!



## VELOX – Year pack

Art.no. Description

055G3010	VELOX Year pack incl. mouthpiece
----------	----------------------------------

## VELOX – Consumables

Art.no. Description

055G7100	Power cord
----------	------------

055G8000	Carrying bag
----------	--------------

055G6100	VELOXCare
----------	-----------

055G3500	Medication lid
----------	----------------

055G4000	Controller
----------	------------



# eFlow® consumables

The eFlow aerosol generator and nebuliser are replaced as needed.



## eFlow Rapid - Consumables

Art.no. Description

678G8222	Nebuliser inkl. aerosolgenerator
----------	----------------------------------

678B2620	Aerosolgenerator
----------	------------------

## eFlow Rapid – Consumables

Art.no. Description

078B7116	USB-C charger
----------	---------------

178G6010	Connection cord
----------	-----------------

078E8010	Carrying bag
----------	--------------

078G6100	EasyCare cleaning device
----------	--------------------------

078G3402	Inspiratory valve
----------	-------------------

078G3800	Medication lid
----------	----------------

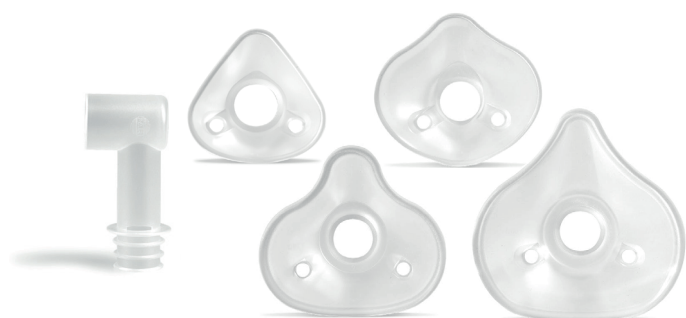
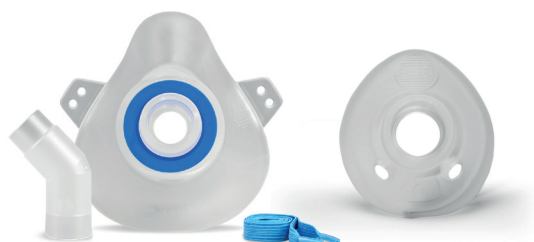
078E8000	Fabric bag for nebuliser
----------	--------------------------

Fits the latest eFlow model.



# PARI Masks

PARI offers three types of masks in different sizes to provide patients with effective and comfortable inhalation. All masks have integrated exhalation valves or exhalation holes. The angled bend for SMARTMASK and Baby Mask facilitates inhalation in various positions, even when semi-reclining.



## Approved combinations

- LC SPRINT: All masks
- eFlow: SMARTMASK with and without bend
- VELOX: SMARTMASK without bend

## PARI SMARTMASK with bend

Art.no.	Description
041G0732	SMARTMASK Adult including strap
078G5028	SMARTMASK Baby

## PARI SMARTMASK without bend

Art.no.	Description
055G4521	SMARTMASK Adult including strap
078G5001	SMARTMASK Kids
055G4501	SMARTMASK Baby

## PARI Adult / Child mask

Art.no.	Description
041G0752	Adult mask soft
041G0753	Child mask soft

Including strap.

## PARI Baby masks

Art.no.	Description
041G0910	Babymask size 0 - premature
041G0911	Babymask size 1 - approx. 0-1 years
041G0912	Babymask size 2 - approx. 1-3 years
041G0913	Babymask size 3 - approx. 3 years and above

Including baby bend. Silicon.

## PARI Masker Consumables

Art.no.	Description
041G0572	SMARTMASK 45-degree angle bend
014E2002	Strap blue

The strap fits SMARTMASK Adult, Adult and Child mask soft.

# PARI Products for tracheostoma

Enables nebulisation for patients with a tracheostomy.  
Approved for use with the LC SPRINT nebuliser.



## PARI Tracheo set

Art.no.	Description
---------	-------------

025G0007	Tracheo mask
----------	--------------

Mask and adapter. Exhalation occurs through holes in the tube.  
Nebuliser not included.



## PARI Tracheo set

Art.no.	Description
---------	-------------

023G1080	Tracheo adapter
----------	-----------------

The adapter fits a 15 mm connection.  
Includes nebuliser with orange nozzle and connection tubing..

# PARI PEP breathing

PEP (Positive Expiratory Pressure) is a breathing technique used, among other things, to mobilize mucus and to raise or lower the functional residual capacity (FRC) in the lungs.



## PARI PEP S - System

Art.no.	Description
---------	-------------

018G4009	PEP S – System
----------	----------------

018G1600	Manometer 0-100 mbar
----------	----------------------

018G4020	Inspiratory valve
----------	-------------------

With this accessory, inhalation and PEP breathing can be combined at the same time. Individually adjustable resistance.

Can be used independently without nebuliser. Nose clip included.

## PARI O-PEP

Art.no.	Description
---------	-------------

018G5006	PARI O-PEP
----------	------------

Oscillating Positive Expiratory Pressure. It creates an oscillating resistance by a metal ball vibrating.  
Includes bag and strap.



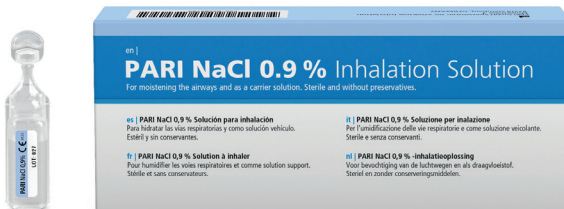
# PARI Inhalation solutions

One of the oldest and gentlest ways of treating respiratory diseases is to inhale saline solutions. Whether sea air, salines or PARI nebulisers, inhaling healthy air and a healing salty mist soothes and protects your airways.

## Saline solutions for nebuliser therapy are available in different concentrations:

- **Isotonic saline solutions** with a salt content of 0.9% moisten the airways.
- **Hypertonic saline solutions** with a salt content of 1% or higher loosen the mucus. The more hypertonic the saline solution, the stronger the effect.

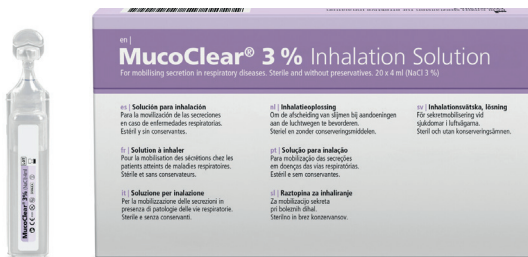
Store at room temperature. Shelf life 3 years from date of manufacture.



## PARI NaCl Inhalation solution

Art.no.	Description
077G0000	20 pcs
077G0003	60 pcs
077G0006	120 pcs

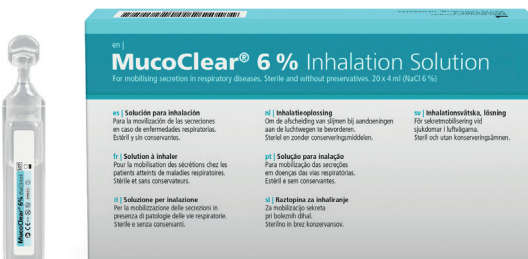
Ready-mixed isotonic sodium chloride in 2.5 ml ampoules. 0.9% solution.



## MucoClear® Inhalation solution 3%

Art.no.	Description
077G5000	20 pcs
077G5003	60 pcs

Ready-mixed hypertonic sodium chloride in 4 ml ampoules.



## MucoClear® Inhalation solution 6%

Art.no.	Description
077G3000	20 pcs
077G3001	60 pcs

Ready-mixed hypertonic sodium chloride in 4 ml ampoules.

# PARI Accessories



## PARI LC Interrupter

Art.no.	Description
---------	-------------

022G1000	Interrupter
----------	-------------

Accessory for nebuliser LC SPRINT. Delivers aerosol only when the button is pressed. Turn the button for continuous flow.



## PARI Filter Valve Set

Art.no.	Description
---------	-------------

041G0509	Filter valve set
----------	------------------

041G0522	Filter pads 30 pcs
----------	--------------------

041G0523	Filter pads 100 pcs
----------	---------------------

041G0524	Filter pads 1000 pcs
----------	----------------------

Filters out 99.4% of all aerosol, e.g. antibiotics and steroids. Includes mouthpiece without valve and 1 filter pad.

Filter pad must be replaced after each inhalation.



## PARI Nose Clip

Art.no.	Description
---------	-------------

041G3500	Nose clip
----------	-----------

Can be reconditioned and disinfected in a washer-disinfector.



## PARI Mouthpiece, consumables

Art.no.	Description
---------	-------------

022G3050	Mouthpiece with valve, for LC SPRINT and VELOX
----------	--

078G3601	Mouthpiece for eFlow
----------	----------------------

012G1720	Mouthpiece w/o valve, for Filter valve set and PEP S
----------	--



## PARI Connection tubing for PARI BOY Classic

Art.no.	Description
---------	-------------

041G4591	Connection tubing 1,2 m standard
----------	----------------------------------

041G4587	Connection tubing 1,9 m long
----------	------------------------------

# PARI spare parts



## PARI BOY Classic spare parts

Art.no.	Description
041G1002	Filter excl. filter holder 5 pcs
041G1003	Filter with filter holder 1 pcs
130S2010	Upper case with handle
130S2000	Lower case
130S1015	Memory piston seal
130S1019	Casing feet 40 pcs
130S1080	Power cord
130S1341	Connecting plate

## PARI BOY Classic test device

Art.no.	Description
007B0001	Test device PG041, analog
007B1010	Test device PG101, digital
041B1023	Reference nozzle 0.48 mm, for test device PG041



It is important to regularly perform service and maintenance on medical equipment to ensure optimal safety and functionality.

TIMIK's service team consists of certified service technicians with experience in maintenance and servicing of medical equipment. All our technicians have completed training and are certified to perform service on the medical devices we distribute and sell.

We offer regular maintenance service and maintenance agreements.

**[www.timik.dk](http://www.timik.dk)**  
**Tel: 823006700**



[www.timik.dk](http://www.timik.dk) • Tel: 82306700 • [info@timik.dk](mailto:info@timik.dk)



**Contact your regional  
representative for a demonstration or if you  
have questions about the products**

